



SMART MATURE RESILIENCE

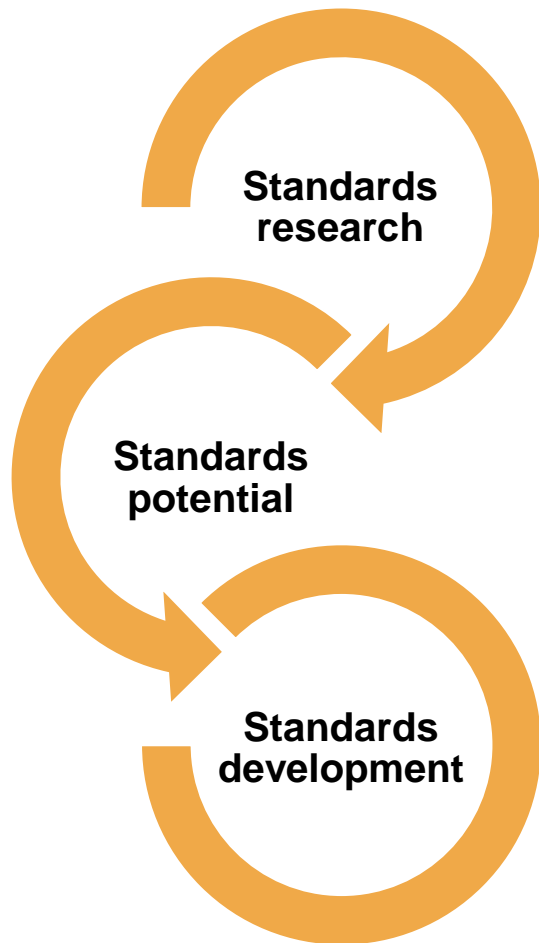


STANDARDISATION ACTIVITIES WITHIN SMR

BRUSSELS, 07 JUNE 2018



STANDARDIZATION IN R&I PROJECTS



- Identify standards relevant for the project (support implementation)
- Assessment of list of identified standardization activities
- Provide insights from standards, standardization work
- Conduct standardization potential workshops
- Comparison of identified standards with new potential topics (gap)
- Liaison with relevant standardization committees
- Initiation of new standards (e.g. CEN Workshop Agreement)
- Input to existing standards, standardization activities
- Development of standardization roadmaps



SMR SMART MATURE RESILIENCE

- SMR main topics:
 - Climate change, **Critical Infrastructure Dependency**, Societal Aspects
- Holistic approach on resilience on the main topics
- Cities as key organization for change
 - Input via experience exchanges, needs assessment, proactive integration in the development of supporting tools and standards



STANDARDIZATION IN DRS-7 PROJECTS

- One standardization organization (DIN in SMR project)
- DIN within SMR acting as a focal point for standardization
- Conduction of an European Workshop on Resilience in Cities and Communities with all five projects
- Support to existing standardization activities
- Initiation of three new standards

STRATEGY FOR STANDARDIZATION

- Identification of standardization potential based on extensive list of standards, European Workshop and survey with SMR cities



*Example: CEN/TC 439/WG 1
"Critical Infrastructure
Protection (CIP)" –
New project: "Private Security
Provision for the Protection of
Critical Infrastructure"*

- Initiation of an European standards series called 'City Resilience Development', consisting of three CEN Workshop Agreements based on the five tools developed within the SMR project

CWA 17300 STANDARDS SERIES

CWA 17300: City Resilience Development - Operational Guidance

Workshop members: 23 organisations (Categories: Administration, Consultant, Academia or Others) from Denmark, Germany, Greece, Island, Italy, Jordan, Latvia, Norway, Spain, Sweden, UK

Scope: Defines an operational framework for cities that provides guidance on local resilience planning and supports their efforts in building resilience.

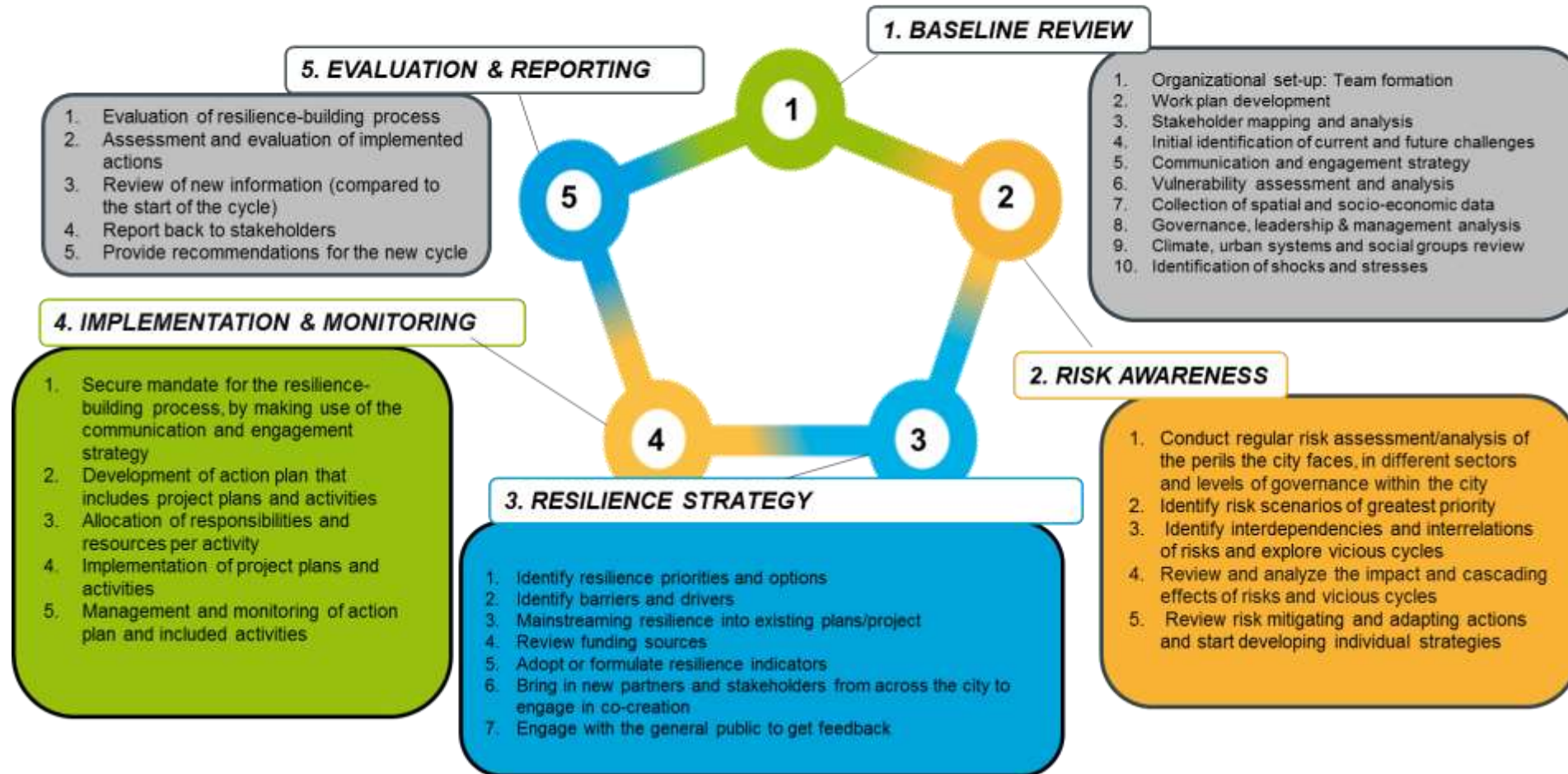
CWA 17301: City Resilience Development – Maturity Model

→ theoretical roadmap about how the resilience process of a city may be (5 maturity stages)

CWA 17302: City Resilience Development – Information Portal

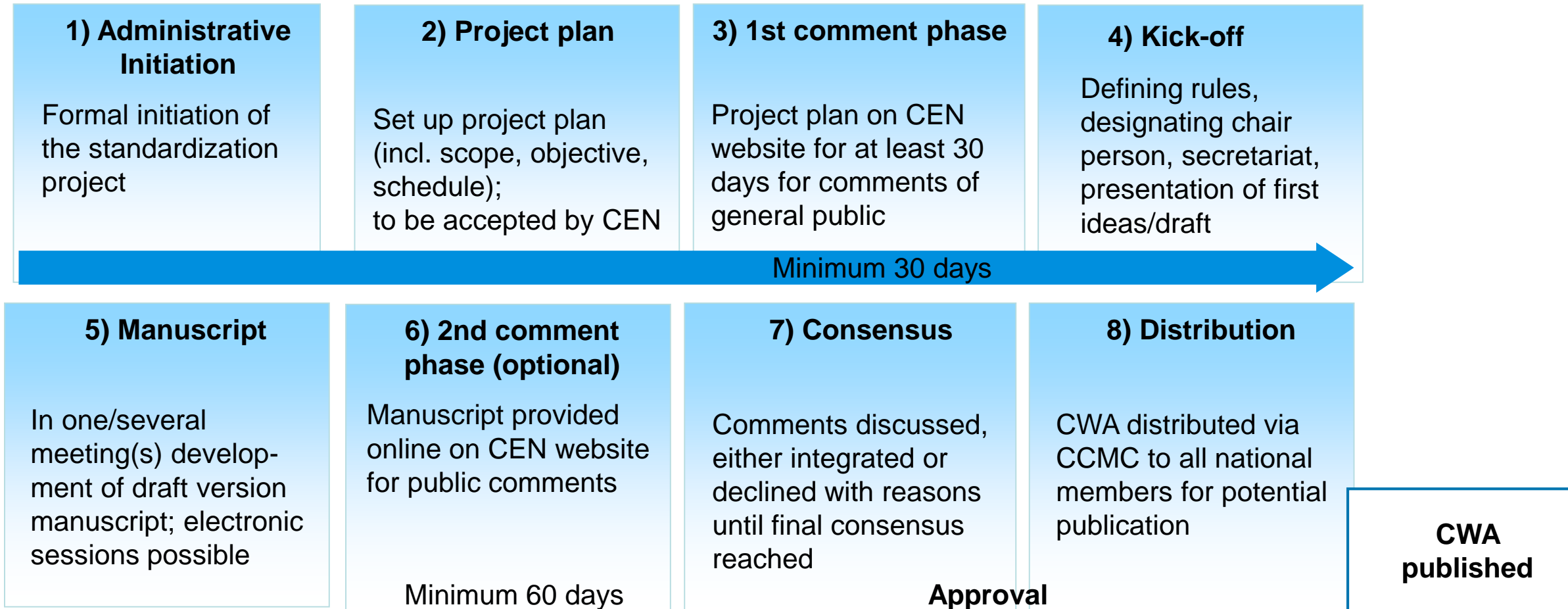
→ requirements and recommendations for an city resilience related information system (interaction)

CWA 17300 – OPERATIONAL GUIDANCE





CEN WORKSHOP AGREEMENT





STANDARDIZATION APPROACH IN SMR

➤ Part 1 – Knowledge gathering

- Participation
- Exchange of experiences
- Awareness raising on existing approaches / standards
- Identification of standardization potentials

➤ Part 2 – Exploitation of results

- Understanding resilience concept
- Assessment of project results with externals
- Development of standards with focus on practical support for strengthen urban resilience
- Establish new communities and build relationships circle of experts



CONTACT DETAILS

Dipl.-Ing. René Lindner

Senior Project Manager
Innovation

Email: rene.lindner@din.de

DIN e. V.
Am DIN-Platz, Burggrafenstraße 6
10787 Berlin

Phone: +49 30 2601-2942
Fax: +49 30 2601-42942