

# **Climate risk extreme events Civil Protection Catalonia experience**

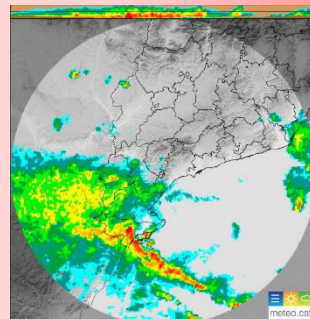
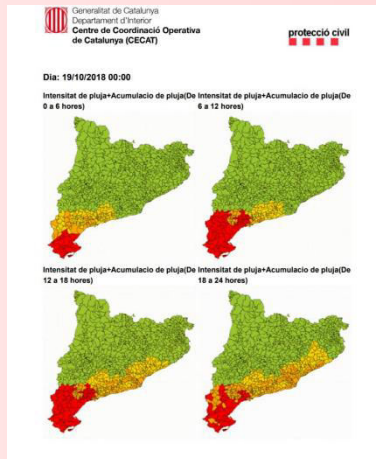
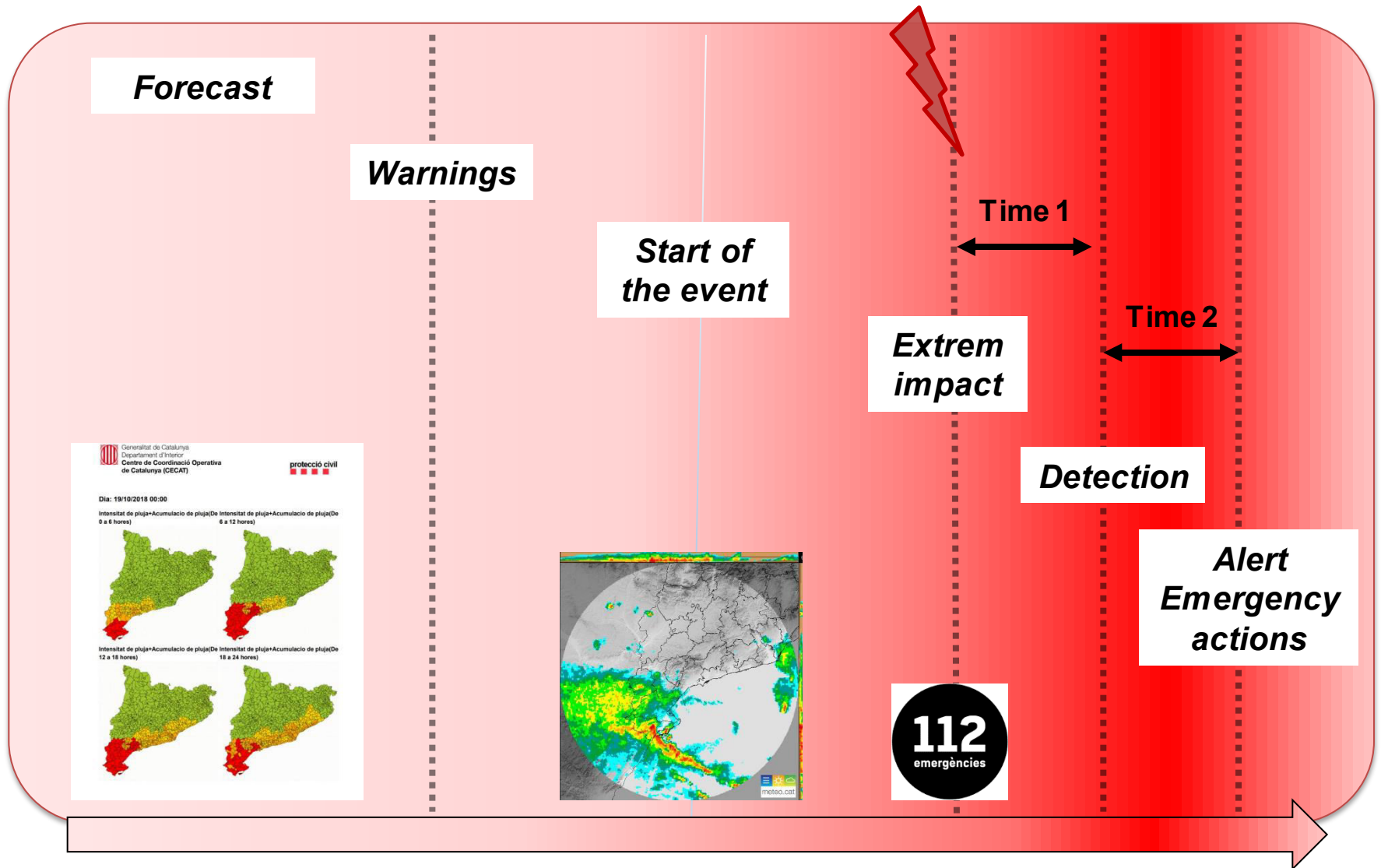
**Community for Research and Innovation for Security (CERIS)**

## ANYWHERE experience – key improvement

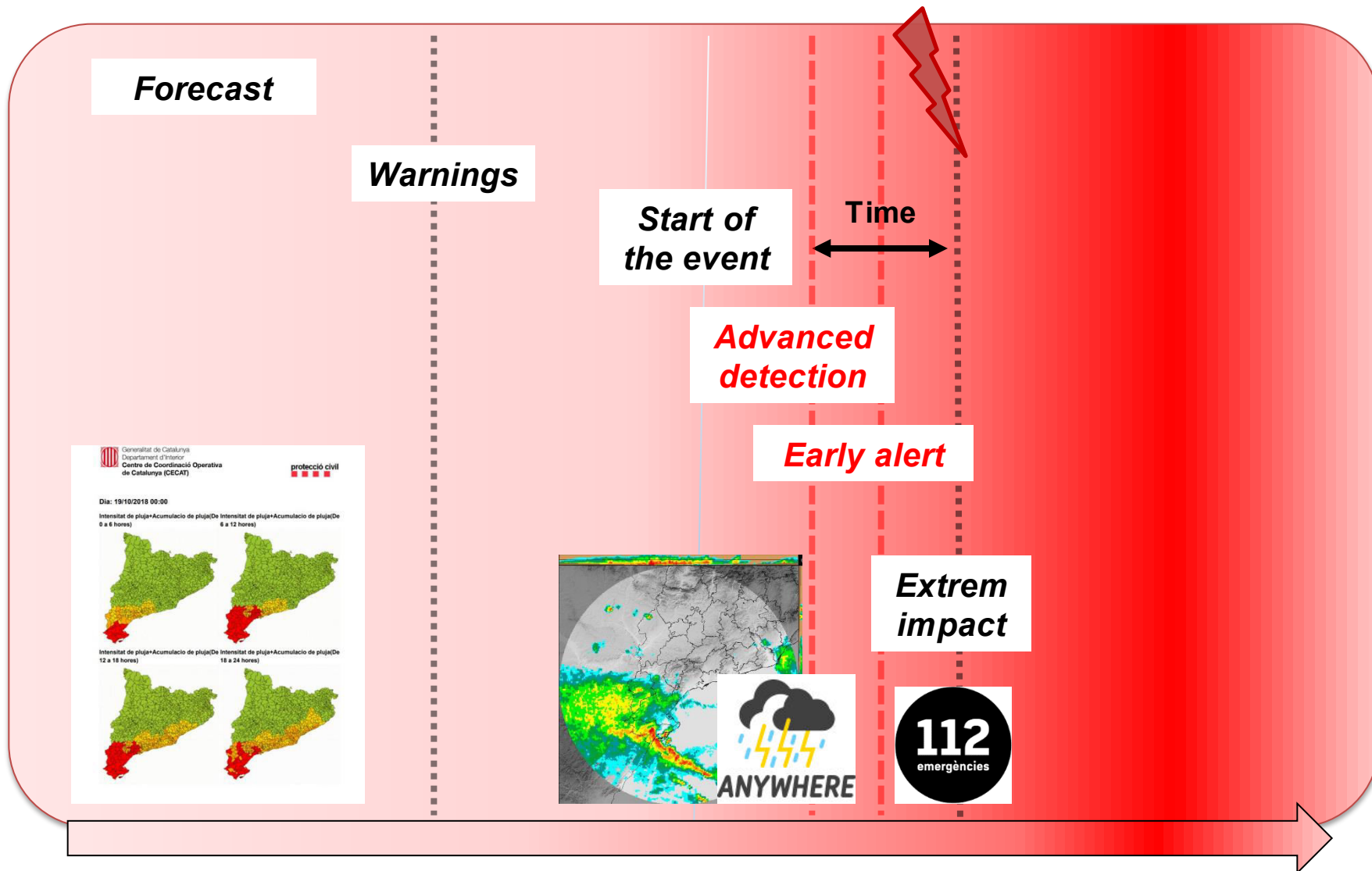
- ❑ It leads to a change in the paradigm of the emergency management of climate risk extreme events
  - Early warnings: in advance to damages
  - Warnings – alerts translated to impact
  - Modulated response based on the risk level detected
  - Applicable to all the territory (not depending in gauges, not limited to some areas)



# Climate extremes – Civil Protection Catalonia



# Climate extremes – Civil Protection Catalonia



## ANYWHERE experience – key improvement

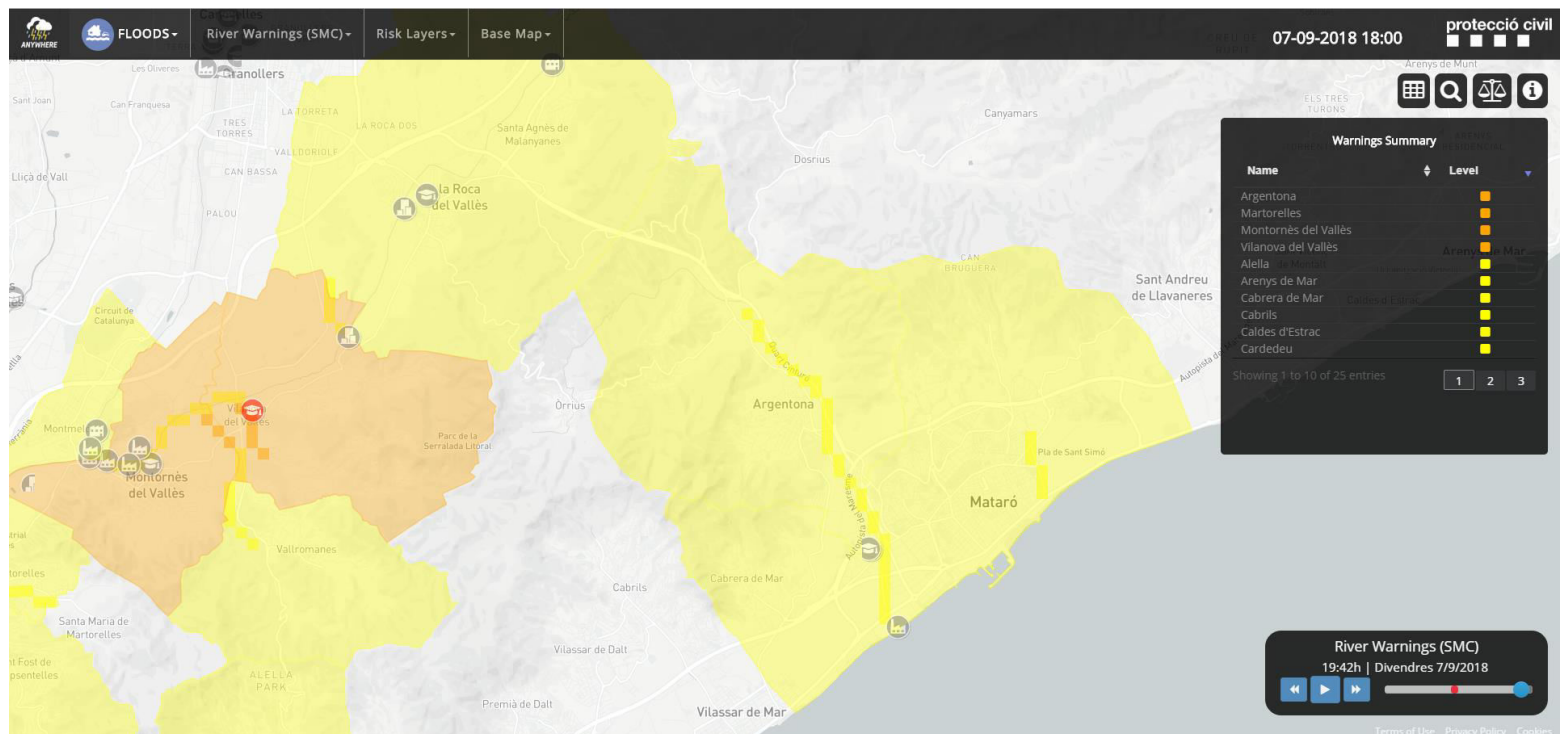
- ❑ From hazard forecast to potential impact
  - Combine real time data sources and translate to potential damage – impact
  - Focus on potential critical scenarios (local)
  - Detect and analyze specific hazardous areas
  - Detect critical infrastructures and high vulnerable activities potentially affected
  - Propose warnings and alerts to population



## ANYWHERE experience – key improvement

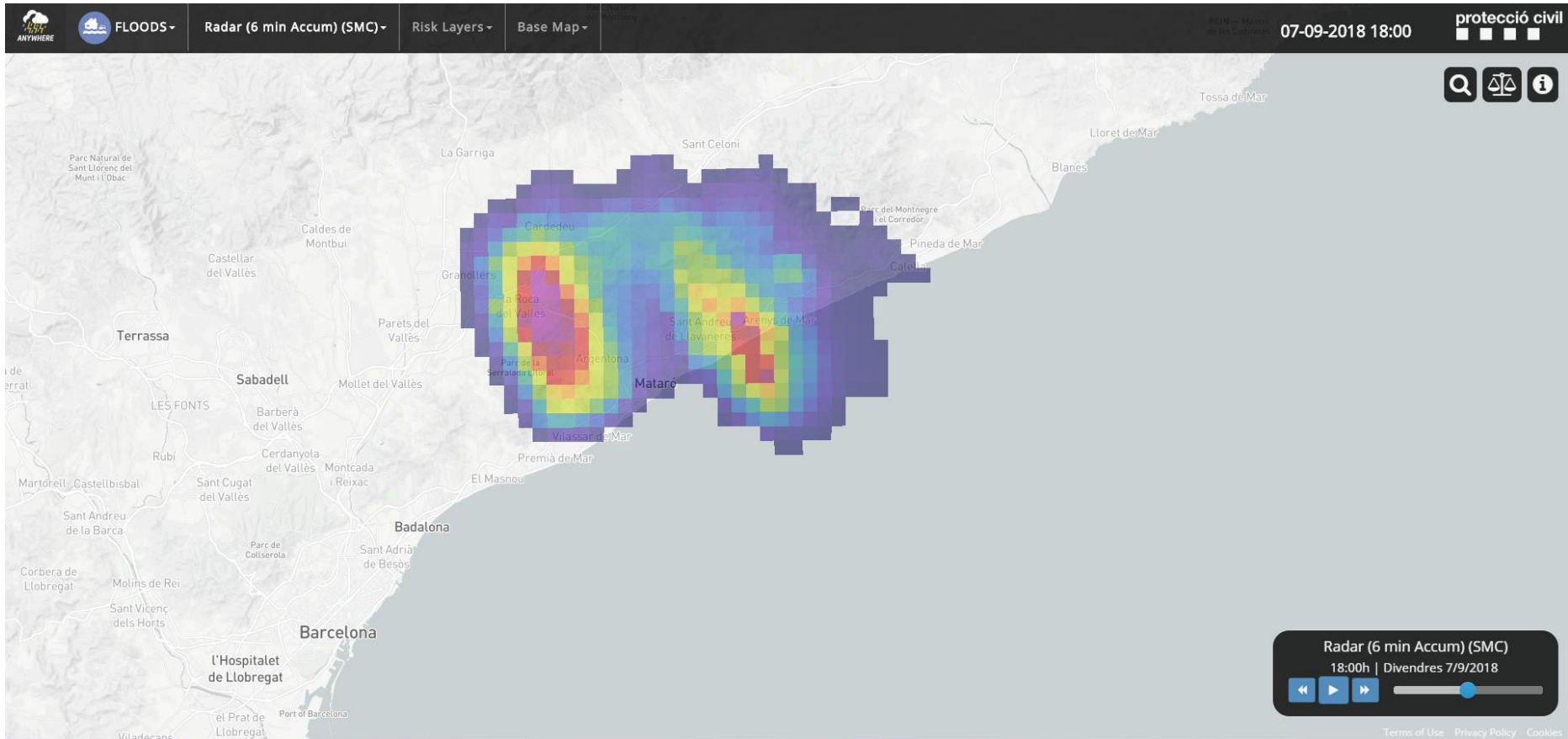
### □ Applicable

- With local scale
- Make it easy: automatize warnings with the info just needed and summarized
- Propose warnings and alerts to population



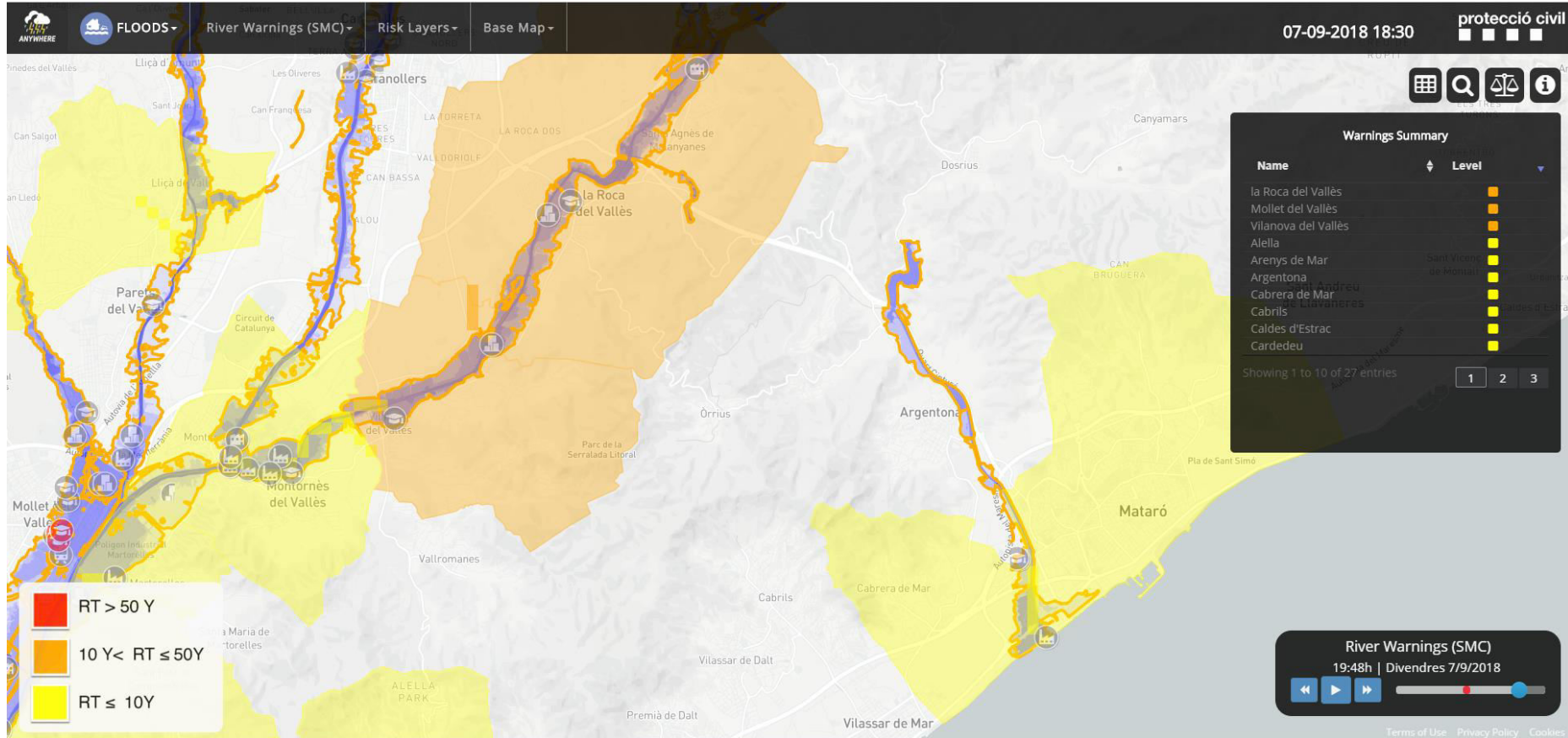
# Climate extremes – Civil Protection Catalonia

## ANYWHERE experience – key improvement



# Climate extremes – Civil Protection Catalonia

## ANYWHERE experience – key improvement





## ANYWHERE experience – key improvement

- ❑ Civil Protection involve since the very beginning of the project
- ❑ Defining needs in operational terms (emergency response)
- ❑ Working closely with developers and scientists
- ❑ Translating information available to needs

## Future

- ❑ Regional Civil Protection organizations is key to define needs in emergency management. Must be in the definition process of projects
- ❑ Projects not civil protection oriented since the beginning may not succeed
- ❑ Involving vulnerable and critical activities: campsites, leisure areas, ...
- ❑ Connecting with citizens: risk communication, warnings, alerts and citizen contributions
- ❑ Focusing in operational needs but also in non manageable scenarios: risk prevention in urban planning
- ❑ Uncertainty: how to deal with; baline scenarios